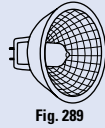
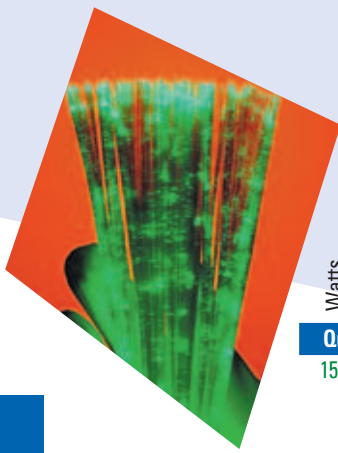


Photo/Projection SECTION 2

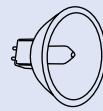


Watts	Volts	Order Code	Description	Case Qty.	Bulb	Base	Filament Type	MOL (in)	Color Temp.	CBCP	Working Distance (in)	Life (hrs)	Burn Position	Application	Footnotes	Figure Number
Quartzline® Multi-Mirror® Reflectors – MR16 (Continued)																
150	15	41254 EFR		20	MR16	GZ6.35 2-Pin	CC-6	1.75	3350		1.25	50	HD	8mm projection	64	289
		25137 Q150MR16-15LEADS		20	MR16	Special Leads	C-8	–	3300	–	–	200	BDTH	Optical Printing	64	
		20 43537 DDL UNIT		20	MR16	GX5.3 2-Pin	C-6	1.75	3150		7.75	500	HD	Microfilm	64	289
		21 29151 EJM		20	MR16	GX5.3 2-Pin	CC-6	1.75	3350		1.5	40	HD	8mm projection	64	289
		35200 EKE		20	MR16	GX5.3 2-Pin	CC-6	1.75	3250		1.75	250	HD	8mm projection, fiber optics	64	289
		21 38306 ELD/EJN		20	MR16	GX5.3 2-Pin	CC-6	1.75	3350		6.5	40	HD	Microfilm	64	289
		120 43756 ESD UNIT		20	MR16	GY5.3 2-Pin	CC-8	1.75	3350		1.75	12	HD	Enlarger, projection	64	289
		15477 EZK UNIT		20	MR16	GY5.3 2-Pin	CC-8	1.75	3200	3600		200	U	Camera Light	64	289
		200 29150 EJL		20	MR16	GX5.3 2-Pin	CC-6	1.75	3400		1.25	50	HD	16mm, Color printer	64	289
		36899 EKX		20	MR16	GX5.3 2-Pin	CC-6	1.75	3400		5.5	25	HD	Microfilm	64	289
		11132 EWF UNIT		20	MR16	GX5.3 2-Pin	CC-8	1.75	3300		11.75	50	H22	Overhead projection	64	289
		82 13152 EYA		20	MR16	GY5.3 2-Pin	CC-8	1.75	3300			50	HD	Enlarger	64	289
		250 37462 ELC		20	MR16	GX5.3 2-Pin	CC-6	1.75	3400		1.25	50	HD	Fiber optics, color printer	64	289
		22023 ELC/C		20	MR16	GX5.3 2-Pin	CC-6	1.75	3400		1.25	50	HD	Fiber optics, color printer	64	289
		15377 ELC/500		20	MR16	GX5.3 2-Pin	CC-6	1.75	3350		1.25	500	HD	Fiber optics, color printer	64	289
		82 11110 EVW UNIT		20	MR16	GY5.3 2-Pin	CC-8	1.75	3300		11.75	50	H22	Overhead projection	64	289
		120 38686 ENH UNIT		20	MR16	GY5.3 2-Pin	CC-8	1.75	3250	11700	6	175	HD	Slide projection	64	289
		11322 ETJ		20	MR16	GY5.3 2-Pin	CC-8	1.75	3300		1.5	175	HD	Fiber Optics	64	289
		11750 EXX		20	MR16	GY5.3 2-Pin	CC-8	1.75	3300	6750		25	U	Camera Light	64	289
		300 38476 ELH		20	MR16	GY5.3 2-Pin	CC-8	1.75	3350		6	35	HD	Slide projection	64	289
		38685 ENG		20	MR16	GY5.3 2-Pin	CC-8	1.75	3450		6	15	HD	Slide projection	64	289
		340 41874 ERV UNIT		20	MR16	GX5.3 2-Pin	CC-8	1.75	3300		11.75	75	HD	Overhead projection	64	289
		360 41705 ENX UNIT		20	MR16	GY5.3 2-Pin	CC-8	1.75	3300		11.75	75	HD	Overhead projection	64	289
		86 19475 ENX-5 UNIT		20	MR16	GY5.3 2-Pin	CC-8	1.75	3300			75	HD	Overhead projection	64	289
		100 41702 EPW UNIT		20	MR16	GY5.3 2-Pin	CC-8	1.75	3250		11.75	75	HD	Overhead projection	64	289
		410 21613 FXL		20	MR16	GY5.3 2-Pin	CC-8	1.75	3300		11.75	38	HD	Overhead projection	64	289

Quartzline® Reflector Lamps

FEATURES

- Non-faceted (smooth) dichroic reflectors



Watts	Volts	Order Code	Description	Case Qty.	Bulb	Base	Filament Type	MOL (in)	Color Temp.	Working Distance (in)	Life (hrs)	Burn Position	Application	Footnotes	Figure Number
Quartzline® Reflector Lamps															
50	18	41885 ELS/ELR UNIT		24	MR14	GX7.9 2-Pin	CC-8	1.41	3100	4.75	650	HD	Microfilm	64	83
		30 40598 ENZ UNIT		20	MR16	GX5.3 2-Pin	CC-6	1.75	3450	1.25	25	HD	8mm projection	64	82
80	19	32886 EJY		20	MR16	GX5.3 2-Pin	CC-6	1.75	3400	1.5	25	HD	Fiber Optics	64	82
		30 37412 ELB		20	MR16	GX5.3 2-Pin	CC-6	1.75	3400	1.25	18	HD	8mm projection	64	82
		150 39742 DNF		24	MR16	GX7.9 2-Pin	CC-8	1.77	3400	2.75	25	HD	8mm projection	64	83
		32882 EJA		20	MR16	GX5.3 2-Pin	CC-6	1.75	3350	1.1	40	HD	Fiber Optics	64	82
		32831 EJV		20	MR16	GX5.3 2-Pin	CC-6	1.75	3350	1.75	40	HD	8mm proj., printer	64	82
		120 40161 DNE UNIT		24	MR16	G7.9 2-Pin	CC-8	1.77	3350	2.75	12	HD	8mm projection	64	83
		250 40017 EMM/EKS		24	MR14	GX7.9 2-Pin	CC-8	1.66	3400	2.63	50	HD	16mm projection	64	83
		120 40658 BHB UNIT		24	MR14	G7.9 2-Pin	CC-8	1.67	3350	2.63	25	HD	16mm projection	64	83

